

OLDWAY GARDENS

Nature Trail



Follow this trail to explore the wilder side of Oldway Gardens.

The formal gardens were first created over 150 years ago and are now a haven for wildlife. Many creatures have made it their home and others often visit.

What wildlife will you spot today?

Join this circular trail at any point and use the spotting guide over leaf to tick off what you find.

- NATURE TRAIL
- ALTERNATIVE ROUTE



ZOOM IN AND LOOK CLOSELY AT THE WILDLIFE



LOOK UP AND OUT TO SEE THE VIEWS FROM THE GARDEN

1 TREMENDOUS TREES



Oldway Gardens is full of trees. A single tree can support 100s of different species of animals and plants. Some make a home in the tree, some eat its leaves and others burrow into its trunk or live amongst its roots.

Walk among the trees. Look up to the sky. What can you see and hear? Reach out and feel the texture of the bark. How does it make you feel?

2 POLLINATOR PATCH

These flower beds have been sown with wild flower seed. Sit for a while and see if any flying insects visit. Can you spot a bee, butterfly or beetle?



3 ORANGERY WALL

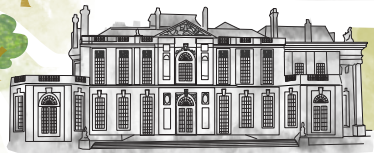
A large wall is all that remains of the orangery that was damaged during the second world war. Now this wall is home to mini-beasts, plants and occasionally nesting birds.

4 ROCKERY AND GROTTA

The grotto was built around 1900 and the rocks create a special habitat for wildlife. If you look closely, you'll spot minibeasts in the cracks and moss and lichen growing on the rocks.



ROTUNDA



OLDWAY MANSION

LITTLE OLDWAY

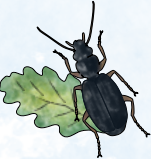
LIME WALK

TEA HUT

TENNIS COURTS

6 WOODLAND PATH

Once a tree dies, it is still an important habitat for wildlife. Can you find a rotting tree stump? Are there any holes made by insects? Is there any fungi, lichen or moss growing on it?



5 POND

Pause by the water. What reflections can you see?

The pond is home to many creatures. Some live their whole life underwater such as the Great diving beetle, some live only part of their life in the water like dragonflies and others are just visitors. Are there any visitors to the pond today?

Spotting Guide

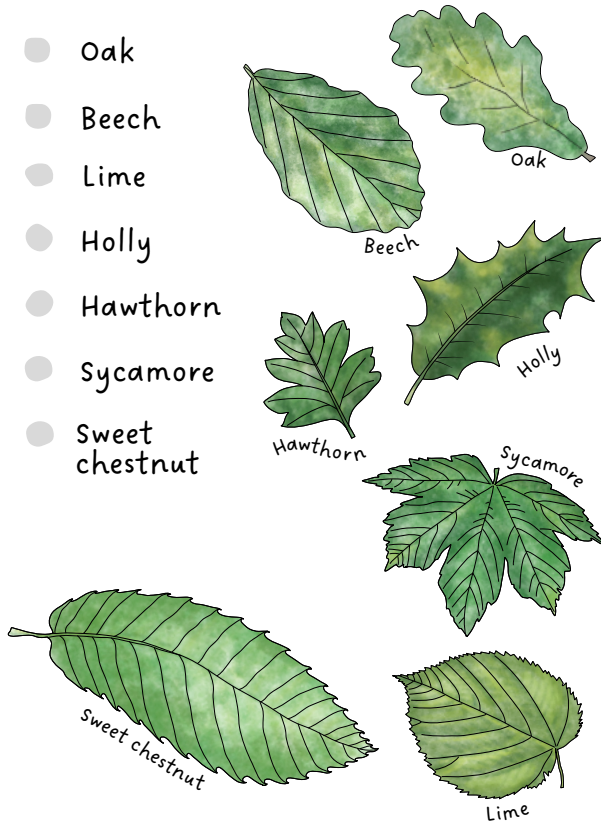
See what wildlife you can spot as you walk around Oldway Gardens.

✓ Tick them off as you find them.

Wildlife shows itself at different times of the day and across different seasons... You may have to visit several times to find everything!

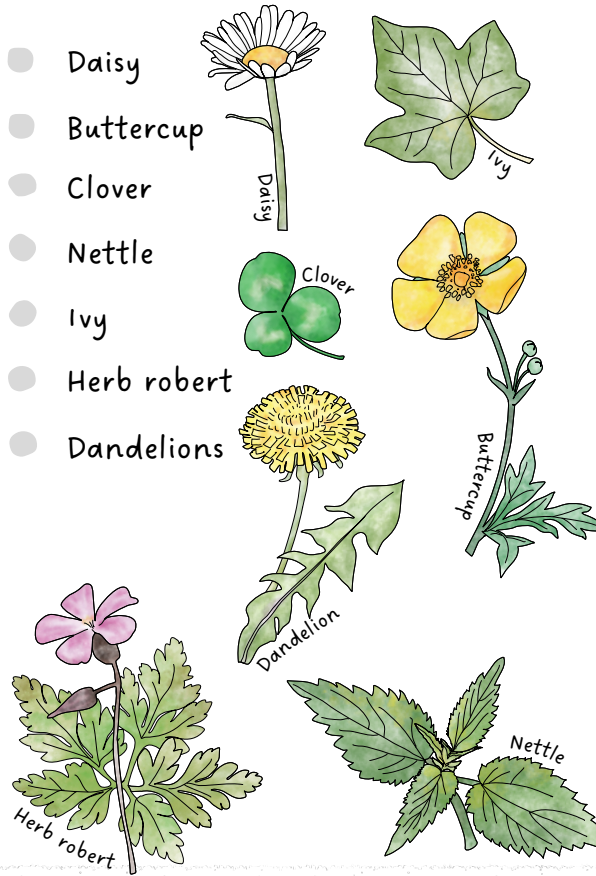
TREES

- Oak
- Beech
- Lime
- Holly
- Hawthorn
- Sycamore
- Sweet chestnut



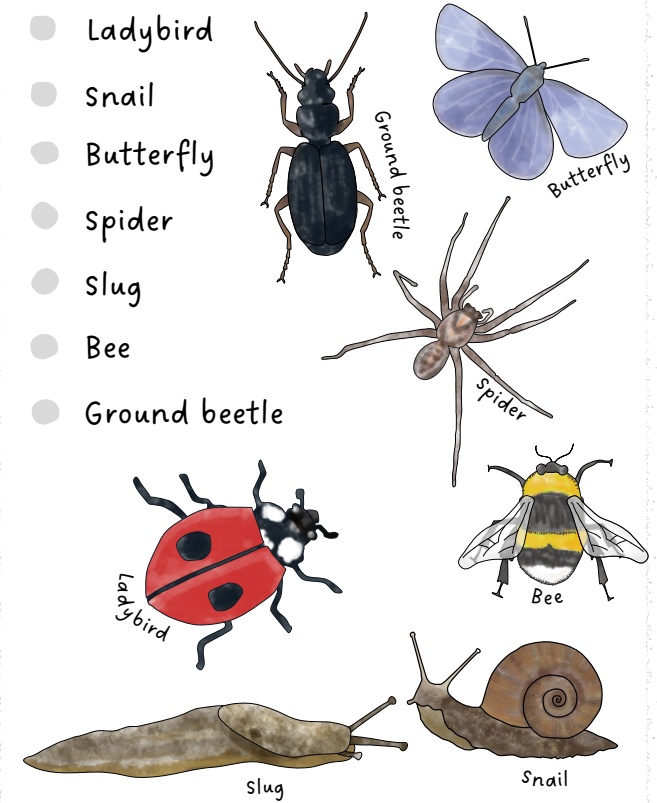
WILD PLANTS AND FLOWERS

- Daisy
- Buttercup
- Clover
- Nettle
- Ivy
- Herb robert
- Dandelions



MINI-BEASTS

- Ladybird
- Snail
- Butterfly
- Spider
- Slug
- Bee
- Ground beetle



COLOUR AND TEXTURE

Nature comes in lots of colours and different textures. Can you find natural things that are:

- soft
- spiky
- spongy
- rough
- bumpy
- crunchy
- red
- orange
- yellow
- green
- blue
- spider's web
- animal footprint
- eaten leaf
- animal home
- droppings (poo)
- feather
- nibbled pine cone

EVIDENCE OF WILDLIFE

We can't always see wildlife but it often leaves evidence behind. Can you spot a: